



GAT MONTHLY MEMBERSHIP PROGRESS REPORT

Results as of: 5/31/2022

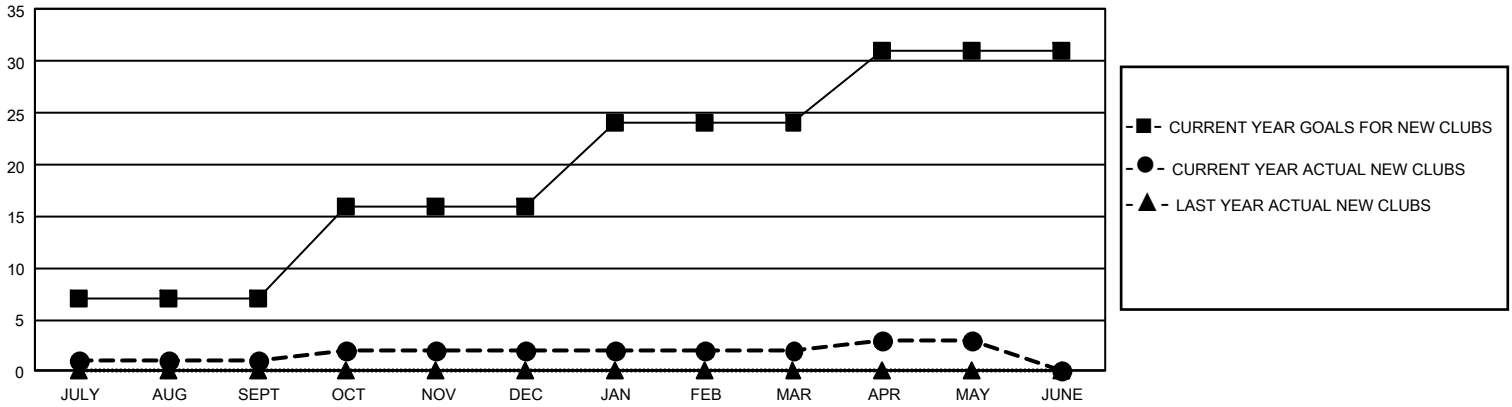
GMT Constitutional Area 1, Group J

REPORT DOES NOT INCLUDE CLUBS IN UNDISTRICTED AREAS.

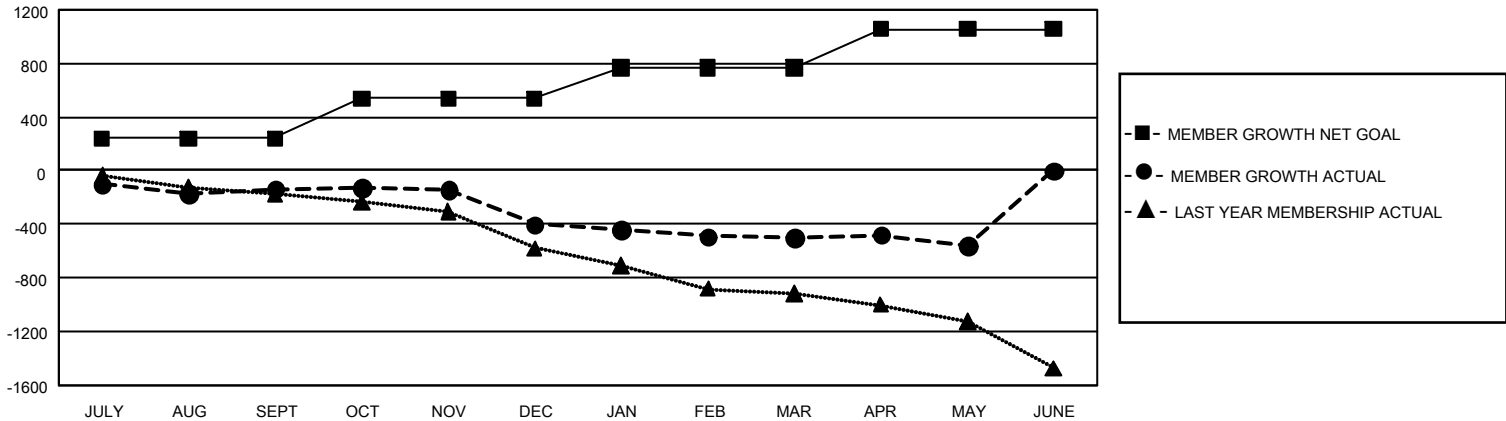
| Clubs | | | |
|-----------------------|---------------|-----------|---------------|
| RESULTS FOR 2021-2022 | | | |
| QUARTER | NEW CLUB GOAL | NEW CLUBS | DROPPED CLUBS |
| JULY/AUG/SEPT | 21 | 1 | 10 |
| OCT/NOV/DEC | 27 | 1 | 13 |
| JAN/FEB/MAR | 24 | 0 | 5 |
| APR/MAY/JUNE | 21 | 1 | 3 |

| Members | | | |
|-----------------------|------------------------|----------------------|--|
| RESULTS FOR 2021-2022 | | | |
| QUARTER | MEMBER GROWTH NET GOAL | MEMBER GROWTH ACTUAL | DROPPED MEMBERS ACTUAL (including transfers) |
| JULY/AUG/SEPT | 241 | 561 | 629 |
| OCT/NOV/DEC | 297 | 521 | 728 |
| JAN/FEB/MAR | 231 | 449 | 497 |
| APR/MAY/JUNE | 287 | 341 | 388 |

GOALS AND ACTUAL NEW CLUBS CUMULATIVE



GOALS AND ACTUAL MEMBERS CUMULATIVE



| | | | |
|------------------------|--|---------------------------------|-----------------|
| DROPPED CLUBS: 31 | 504 CLUBS OF 936 ADDED 1 OR MORE NEW MEMBERS | <u>GENDER DISTRIBUTION</u> | |
| | | MALE | 14,645 (69.99%) |
| <u>DROPPED MEMBERS</u> | | FEMALE | 6,276 (30.00%) |
| DECEASED | 343 | NON BINARY | 1 (0.00%) |
| CLUB CANCELLED | 153 | PREFER NOT TO ANSWER | 1 (0.00%) |
| OTHER | 1,746 | TOTAL FAMILY UNIT MEMBERS | 4,093 |
| TOTAL | 2,242 | FAMILY MEMBERS PAYING HALF DUES | 2,084 |

[CLICK HERE FOR CUMULATIVE MEMBERSHIP DATA](#)